

6

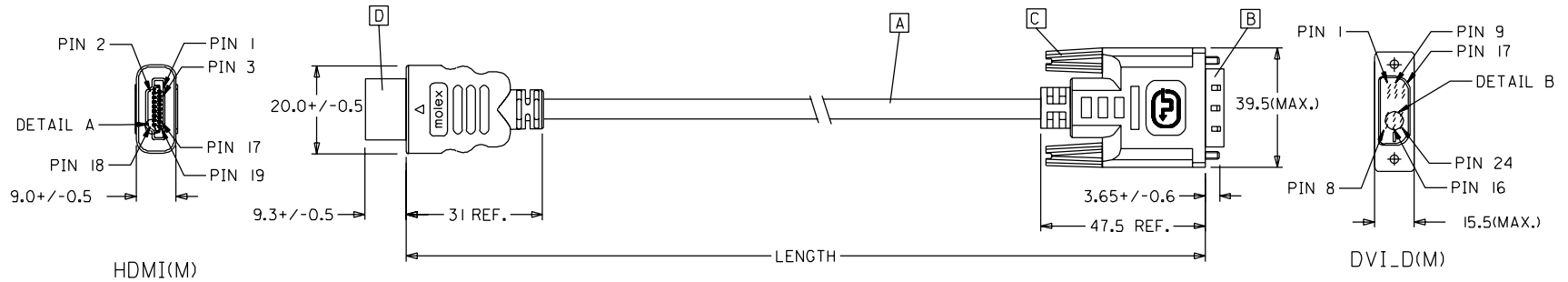
5

4

3

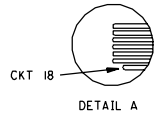
2

1

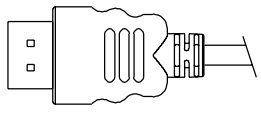


HDMI(M)

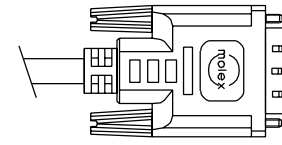
DVI_D(M)



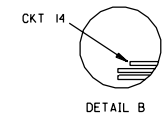
DETAIL A



BACK SIDE



BACK SIDE



DETAIL B

MX P/N	DESCRIPTION	LENGTH	CABLE COLOR	CABLE OD
88768-3620	HDMI TO DVI-D(M) CABLE ASS'Y,3M	3000+/-80	BLACK	5,5MM(TMDS - AWG*30)
88768-3610	HDMI TO DVI-D(M) CABLE ASS'Y,2M	2000+/-60	BLACK	5,5MM(TMDS - AWG*30)
88768-3600	HDMI TO DVI-D(M) CABLE ASS'Y,1M	1000+/-30	BLACK	5,5MM(TMDS - AWG*30)
88768-3530	HDMI TO DVI-D(M) CABLE ASS'Y,5M	5000+/-100	BLACK	7,3MM(TMDS - AWG*28)
88768-3520	HDMI TO DVI-D(M) CABLE ASS'Y,3M	3000+/-80	BLACK	7,3MM(TMDS - AWG*28)
88768-3510	HDMI TO DVI-D(M) CABLE ASS'Y,2M	2000+/-60	BLACK	7,3MM(TMDS - AWG*28)
88768-3500	HDMI TO DVI-D(M) CABLE ASS'Y,1M	1000+/-30	BLACK	7,3MM(TMDS - AWG*28)

EC NO. DRWN: CHK: APPR: C	DESCRIPTION REV	QUALITY SYMBOLS MAJOR ▼ = 0 CRITICAL ▽ = 0	GENERAL TOLERANCES: (UNLESS SPECIFIED)		SCALE N.S.T <input checked="" type="checkbox"/> mm <input type="checkbox"/> INCH	DESIGN UNITS <input checked="" type="checkbox"/> mm <input type="checkbox"/> INCH	<input checked="" type="checkbox"/> THIRD ANGLE PROJECTION	<input type="checkbox"/> mm <input type="checkbox"/> INCH <input checked="" type="checkbox"/> mm ONLY	SHT REV REVISE ON CAD ONLY	
		4 PLACES ±0. ±. 3 PLACES ±0. ±. 2 PLACES ±0. ±. 1 PLACE ±0. ±.	mm INCH mm INCH	DRAWN BY & DATE Louis Chen 03/11/17	TITLE: HDMI(M) TO DVI-D(M) CABLE ASS'Y					
		ANGULAR: ± °	CAD FILENAME S88768AA.SOI	MATERIAL NO. SEE TABLE	DRAWING NO. SD-88768-001	SHEET NO. 1 OF 2	MOLEX INCORPORATED			
		THIS DRAWING CONTAINS INFORMATION THAT IS PROPRIETARY TO MOLEX INCORPORATED AND SHOULD NOT BE USED WITHOUT WRITTEN PERMISSION.								SIZE A4

6

5

4

3

2

1

NOTE: 1. OVERMOLD SPECIFICATION

1.1 DVI BOOT MOLDED WITH SNOW WHITE PVC RESIN P/N.

1.1.1 UL94V-0

1.1.2 HARDNESS (DUROMETER): SHORE A 90-95

1.2 HDMI OUTER MOLD WITH BLACK PVC RESIN. UL94V-0.

2. MECHANICAL SPECIFICATION

2.1 CABLE SHOULD STAND THE PULL FORCE 89-11IN FOR 30 SECONDS WITH NO VISIBLE TERMINATION DAMAGE.

2.2 CABLE SHOULD PASS THE FLEX TEST IN 100 CYCLES AT EACH OF PLANES, PER EIA 364-41, CONDITION 1.

3. CABLE ELECTRICAL SPECIFICATION

3.1 DIELECTRIC STRENGTH: 300V AC FOR 10MS.

3.2 INSULATION RESISTANCE: 10 MEGA Ohms MIN.

3.3 DIFFERENTIAL LINES CHARACTERISTIC IMPEDANCE: 100+/-10 Ohms @TDR.

3.4 CONTACT RESISTANCE: 2 OHMS(MAX.).

3.5 SIGNALS CROSSTALK(FEXT): 5% (MAX.) PER ANSI/EIA-364-90.




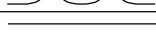



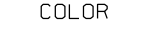
3.6 SIGNALS INTRA-PAIR SKEW : <150 ps.

4. DVI CONNECTOR SPECIFICATION

4.1 REFER TO PRODUCT SPEC. PS74320-0001.

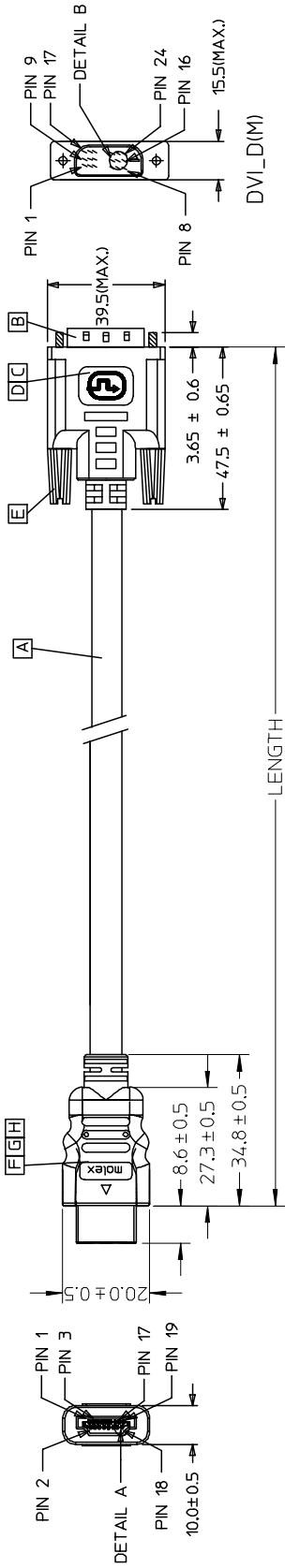
4.2 CONTACT PLATING: AU FLASH.

5. MATERIAL MUST MEET MANAGEMENT REGULATIONS FOR ENVIRONMENT (MX TS-0002).

SHIELD	SHIELD		GROUND
PIN 19	PIN 16	=====	HOT PLUG DETECT
PIN 18	PIN 14	=====	POWER +5V
PIN 17	PIN 15	=====	GROUND(+5V&DDC)
PIN 16	PIN 7	=====	DDC DATA(SDA)
PIN 15	PIN 6	=====	DDC CLOCK(SCL)
PIN 11	PIN 22	=====	TMDS CLOCK SHIELD
PIN 12	PIN 24		TMDS CLOCK-
PIN 10	PIN 23		TMDS CLOCK+
PIN 8	PIN 19	=====	TMDS DATA 0 SHIELD
PIN 9	PIN 17		TMDS DATA 0-
PIN 7	PIN 18		TMDS DATA 0+
PIN 5	PIN 11	=====	TMDS DATA 1 SHIELD
PIN 6	PIN 9		TMDS DATA 1-
PIN 4	PIN 10		TMDS DATA 1+
PIN 2	PIN 3	=====	TMDS DATA 2 SHIELD
PIN 3	PIN 1		TMDS DATA 2-
PIN 1	PIN 2		TMDS DATA 2+
HDMI	DVI-D	COLOR	CABLE FUNCTION

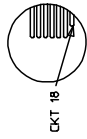
ITEM	DESCRIPTION	QTY.
D	HDMI PLUG ASSY'	1
C	DVI THUMB SCREW	2
B	DVI_D SINGLE CHANNEL G/F CONNECTOR	1
A	DVI SINGLE LINK CABLE (SEE TABLE)	1

EC NO. C	DRWN: CHK: APPR:	DESCRIPTION REV	QUALITY SYMBOLS	GENERAL TOLERANCES: (UNLESS SPECIFIED)	SCALE N.S.T	DESIGN UNITS <input checked="" type="checkbox"/> mm <input type="checkbox"/> INCH	THIRD ANGLE PROJECTION	<input type="checkbox"/> mm INCH <input type="checkbox"/> mm ONLY	SHT	REV
			MAJOR ▼ = 0	mm	INCH	DRAWN BY & DATE Louis Chen 03/11/17	TITLE: HDMI(M) TO DVI-D(M) CABLE ASS'Y	REVISE ON CAD ONLY		
			CRITICAL ▽ = 5	4 PLACES ±0.	±.	CHECKED BY & DATE Teddy Kan 03/11/17	MOLEX INCORPORATED			
			ANGULAR: ± °	3 PLACES ±0.	±.	APPROVED BY & DATE Boron Chen 03/11/17				
					CAD FILENAME S88768AA.S02	MATERIAL NO. SEE TABLE	DRAWING NO. SD-88768-001	SHEET NO. 2 OF 2	SIZE A4	

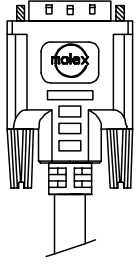


DVI_D(M)

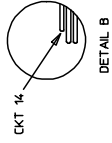
HDMI(M)



DETAIL A



BACK SIDE



DETAIL B

MOLEX P/N	DESCRIPTION	LENGTH	CABLE COLOR	CABLE P/N
88768-3530	HDMI TO DVI-D(M) CABLE ASSY.5M	5000 ± 80	BLACK	7.3MM(TMDS - AWGR28) 887808276
88768-3520	HDMI TO DVI-D(M) CABLE ASSY.3M	3000 ± 80	BLACK	7.3MM(TMDS - AWGR28) 887808276
88768-3510	HDMI TO DVI-D(M) CABLE ASSY.2M	2000 ± 60	BLACK	7.3MM(TMDS - AWGR28) 887808276
88768-3500	HDMI TO DVI-D(M) CABLE ASSY.1M	1000 ± 30	BLACK	7.3MM(TMDS - AWGR28) 887808276

QUALITY SYMBOLS		GENERAL TOLERANCES (UNLESS SPECIFIED)		DIMENSION STYLE		SCALE		DESIGN UNITS	
▶=0		mm	INCH	MM ONLY	---	METRIC			
∇=0		4 PLACES ±	3 PLACES ±	DRAWN BY	DATE				
		2 PLACES ±	1 PLACE ±	JFZHENG	2005/12/26				
		ANGULAR ±		CHECKED BY	DATE				
				JFZHENG	2005/12/26				
				APPROVED BY	DATE				
				DULUO	2005/12/26				
				MATERIAL NO.					
				ENTER PART					
				SD-887683500					
				TITLE					
				#28 HDMI TO DVI 1M CABLE ASSY					
				THIRD ANGLE PROJECTION					

NOTE:

1. OVERMOLD SPECIFICATION:
 - 1.1 DVI BOOT MOLDED SNOW WHITE PVC RESIN 887800076,UL94V-0.
 - 1.2 HDMI INNERMOLD WITH BK PVC 887800019.
HDMI OVERMOLD WITH PVC 887800150
 - 1.3 HDMI DUST COVER WITH PE 887800008

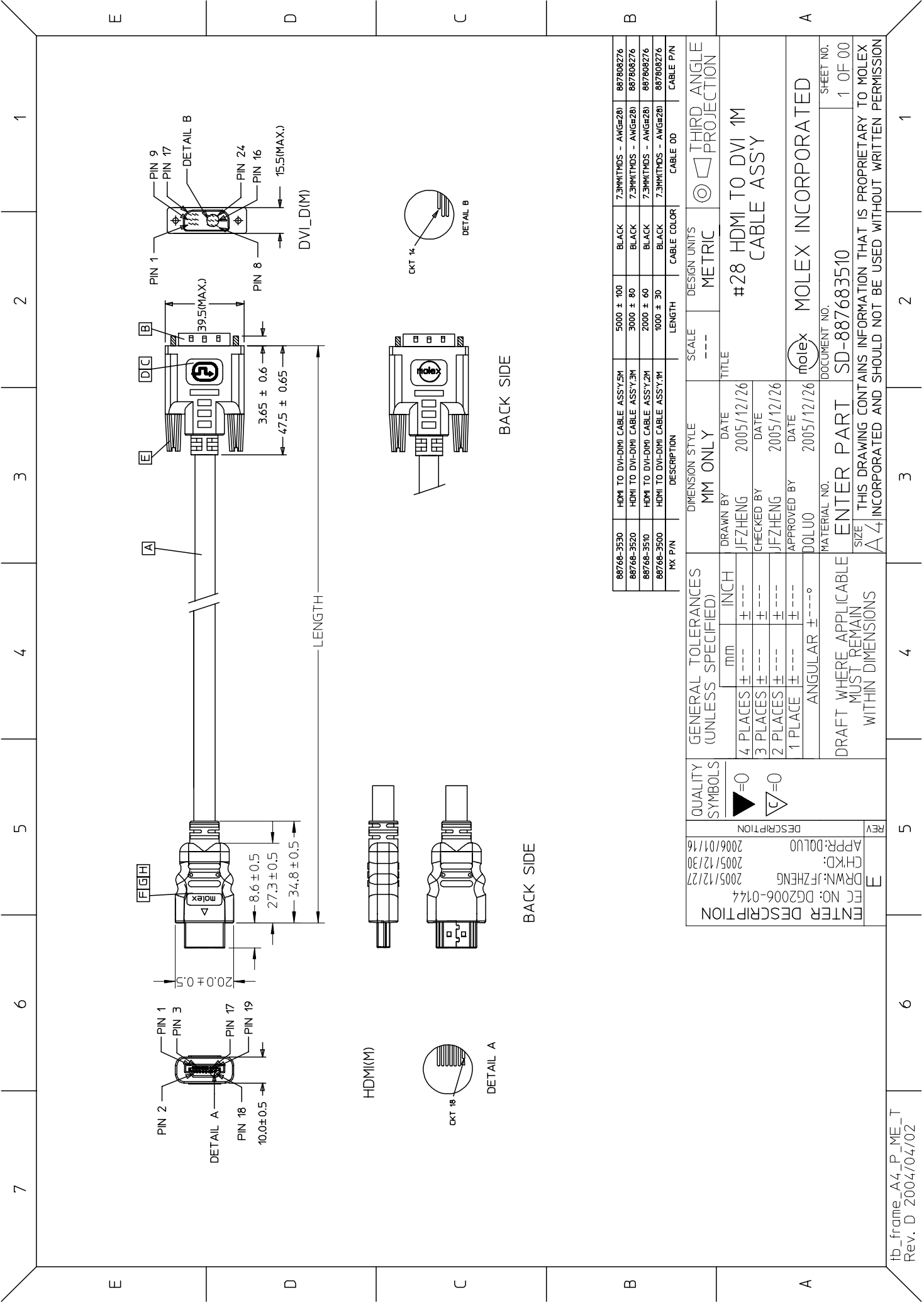
2. MECHANICAL SPECIFICATION
 - 2.1 CABLE SHOULD STAND THE PULL FORCE 89-111N FOR 30 SECONDS WITH NO VISIBLE TERMINATION DAMAGE.
 - 2.2 CABLE SHOULD PASS THE FLEX TEST IN 100 CYCLES AT EACH OF PLANES, PER EIA 364-41, CONDITION 1.
3. PRODUCT ELECTRICAL SPECIFICATION:
 - 3.1 DIELECTRIC STRENGTH.
 - 3.2 INSULATION RESISTANCE.
 - 3.3 CONDUCTIVE RESISTANCE.
 - 3.4 TMDS Signals Time Domain Impedence
 - 3.5 TMDS Signals Time Domain Crosstalk:FEXT
 - 3.6 TMDS Signals Skew
 - 3.7 Attenuation

REFER TO ES-002 ELECTRICAL SPECIFICATION FOR DETAILS.
 4.CABLE CONSTRUCTION/CABLE
 (AWG#28*1P+D)*4 + AWG#28*1P + AWG#28*3C, 7.3MMOD
 5. DVI CONNECTOR SPECIFICATION(DVI)
 5.1 REFER TO PRODUCT SPEC. PS74320-001
 5.2 CONTACT PLATING: AU FLASH.
 6. THIS PRODUCT MUST MEET ROHS COMPLIANCE.

SHIELD	SHIELD	OVERALL SHIELD	GROUND
PIN 19	PIN 16	WHITE	HOT PLUG DETECT
PIN 18	PIN 14	YELLOW	POWER +5V
PIN 17	PIN 15	ORANGE	GROUND(+5V&DDC)
PIN 16	PIN 7	RED	DDC DATA(SDA)
PIN 15	PIN 6	VIOLET	DDC CLOCK(SCL)
PIN 12	PIN 24	WHITE	TMDS CLOCK-
PIN 11	PIN 22	BRAID	TMDS CLOCK SHIELD
PIN 10	PIN 23	BROWN	TMDS CLOCK+
PIN 9	PIN 17	WHITE	TMDS DATA 0-
PIN 8	PIN 19	BRAID	TMDS DATA 0 SHIELD
PIN 7	PIN 18	BLUE	TMDS DATA 0+
PIN 6	PIN 9	WHITE	TMDS DATA 1-
PIN 5	PIN 11	BRAID	TMDS DATA 1 SHIELD
PIN 4	PIN 10	GREEN	TMDS DATA 1+
PIN 3	PIN 1	WHITE	TMDS DATA 2-
PIN 2	PIN 3	BRAID	TMDS DATA 2 SHIELD
PIN 1	PIN 2	RED	TMDS DATA 2+
HDMI	DVI-D	COLOR	CABLE FUNCTION

ITEM	DESCRIPTION	SCALE	DESIGN UNITS	METRIC	THIRD ANGLE PROJECTION	QTY.
H	HDMI METAL PLATED	47152-6009				1
G	HDMI METAL CAN	47152-4001				1
F	HDMI HOUSING ASSY.	47152-1100				1
E	DVI THUMB SCREW	887806077				2
D	PCB	887899569/887899570				1
C	ONE BODY CAN	887899392				1
B	DVLD SINGLE CHANNEL G/F CONNECTOR	743230001				1
A	DVI SINGLE LINK CABLE (SEE TABLE)					1

GENERAL TOLERANCES (UNLESS SPECIFIED)	mm	INCH	DRAWN BY	DATE	MM ONLY	SCALE	DESIGN UNITS	METRIC	THIRD ANGLE PROJECTION
4 PLACES ±	----	±----	JFZHENG	2005/12/26		---			
3 PLACES ±	----	±----	CHECKED BY	DATE					
2 PLACES ±	----	±----	JFZHENG	2005/12/26					
1 PLACE ±	----	±----	APPROVED BY	DATE					
ANGULAR ±	----	°	DQLUO	2005/12/26					
DRAFT WHERE APPLICABLE MUST REMAIN WITHIN DIMENSIONS		MATERIAL NO. 887683500		DOCUMENT NO. SD-887683500		SHEET NO. 2 OF 2			



MOLEX P/N	DESCRIPTION	LENGTH	CABLE COLOR	CABLE P/N
88768-3530	HDMI TO DVI-DMI CABLE ASSY.5M	5000 ± 100	BLACK	7.3MM(TMDS - AWGR28) 887808276
88768-3520	HDMI TO DVI-DMI CABLE ASSY.3M	3000 ± 80	BLACK	7.3MM(TMDS - AWGR28) 887808276
88768-3510	HDMI TO DVI-DMI CABLE ASSY.2M	2000 ± 60	BLACK	7.3MM(TMDS - AWGR28) 887808276
88768-3500	HDMI TO DVI-DMI CABLE ASSY.1M	1000 ± 30	BLACK	7.3MM(TMDS - AWGR28) 887808276

GENERAL TOLERANCES (UNLESS SPECIFIED)	QUALITY SYMBOLS	DESIGN STYLE	SCALE	DESIGN UNITS
4 PLACES ± 0.15 mm	▶=0	MM ONLY	---	METRIC
3 PLACES ± 0.20 mm	◁=0	DRAWN BY JFZHENG	---	
2 PLACES ± 0.25 mm		CHECKED BY JFZHENG	---	
1 PLACE ± 0.30 mm		APPROVED BY DQLUO	---	
ANGULAR ± 0.15°		DATE 2005/12/26	---	
DRAFT WHERE APPLICABLE MUST REMAIN WITHIN DIMENSIONS		DATE 2005/12/26	TITLE #28 HDMI TO DVI 1M CABLE ASSY	
MATERIAL NO. SD-887683510		DATE 2005/12/26	THIRD ANGLE PROJECTION	
ENTER PART SD-887683510		DATE 2005/12/26		
DOCUMENT NO. SD-887683510		DATE 2005/12/26		
SHEET NO. 1 OF 00		DATE 2005/12/26		

NOTE:

1. OVERMOLD SPECIFICATION:
 - 1.1 DVI BOOT MOLDED SNOW WHITE PVC RESIN 887800076,UL94V-0.
 - 1.2 HDMI INNERMOLD WITH BK PVC 887800019.
HDMI OVERMOLD WITH PVC 887800150
 - 1.3 HDMI DUST COVER WITH PE 887800008

2. MECHANICAL SPECIFICATION
 - 2.1 CABLE SHOULD STAND THE PULL FORCE 89-111N FOR 30 SECONDS WITH NO VISIBLE TERMINATION DAMAGE.
 - 2.2 CABLE SHOULD PASS THE FLEX TEST IN 100 CYCLES AT EACH OF PLANES, PER EIA 364-41, CONDITION 1.

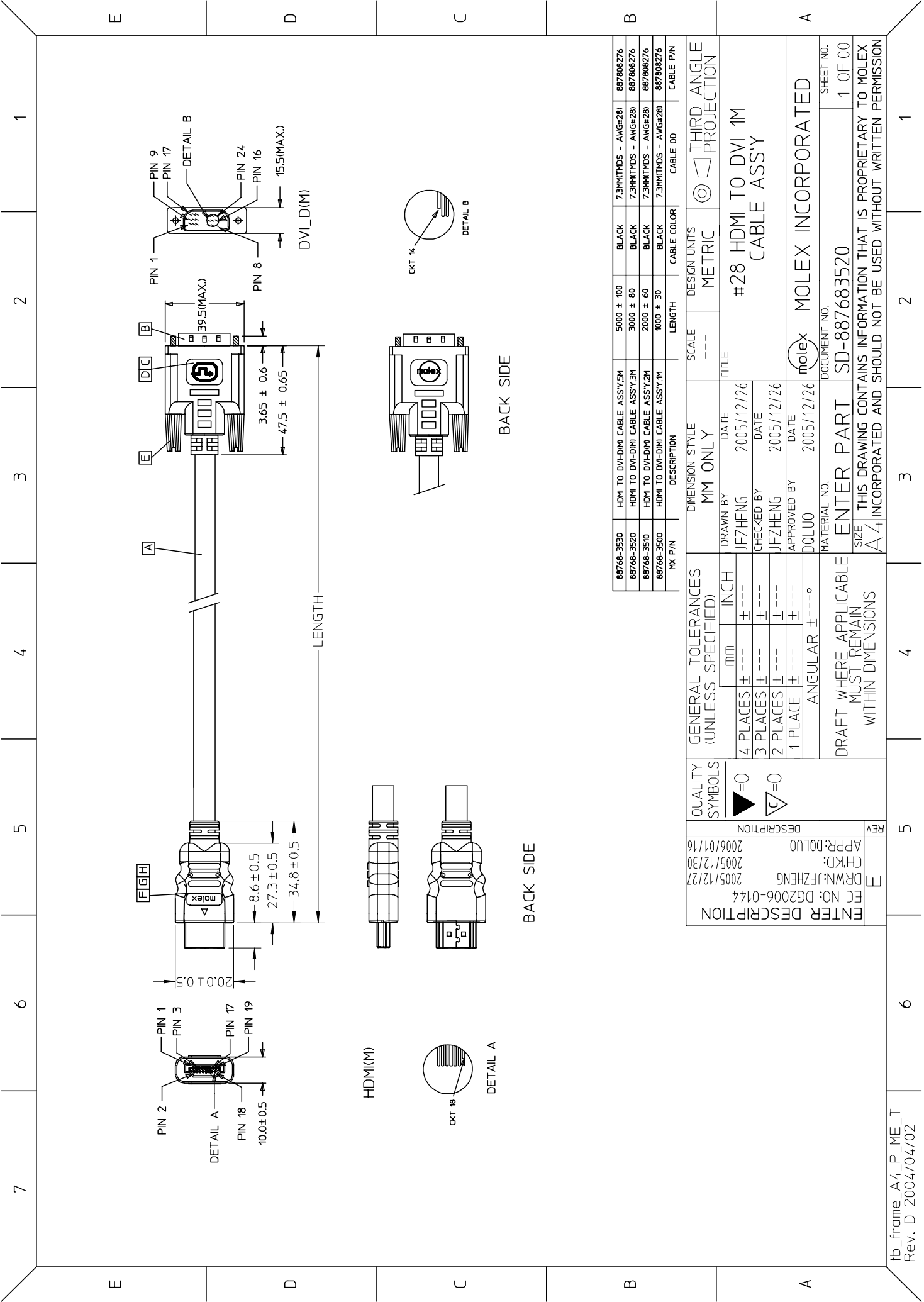
3. PRODUCT ELECTRICAL SPECIFICATION:
 - 3.1 DIELECTRIC STRENGTH.
 - 3.2 INSULATION RESISTANCE.
 - 3.3 CONDUCTIVE RESISTANCE.
 - 3.4 TMSD Signals Time Domain Impedence
 - 3.5 TMSD Signals Time Domain Crosstalk:FEXT
 - 3.6 TMSD Signals Skew
 - 3.7 Attenuation

- REFER TO ES-002 ELECTRICAL SPECIFICATION FOR DETAILS.
- 4.CABLE CONSTRUCTION/CABLE (AWG#28*1P+D)*4 + AWG#28*1P + AWG#28*3C, 7.3MMOD
 5. DVI CONNECTOR SPECIFICATION(DVI 5.1 REFER TO PRODUCT SPEC. PS74320-001 5.2 CONTACT PLATING: AU FLASH.
 6. THIS PRODUCT MUST MEET ROHS COMPLIANCE.

SHIELD	SHIELD	OVERALL SHIELD	GROUND
PIN 19	PIN 16	WHITE	HOT PLUG DETECT
PIN 18	PIN 14	YELLOW	POWER +5V
PIN 17	PIN 15	ORANGE	GROUND(+5V&DDC)
PIN 16	PIN 7	RED	DDC DATA(SDA)
PIN 15	PIN 6	VIOLET	DDC CLOCK(SCL)
PIN 12	PIN 24	WHITE	TMSD CLOCK-
PIN 11	PIN 22	BRAID	TMSD CLOCK SHIELD
PIN 10	PIN 23	BROWN	TMSD CLOCK+
PIN 9	PIN 17	WHITE	TMSD DATA 0-
PIN 8	PIN 19	BRAID	TMSD DATA 0 SHIELD
PIN 7	PIN 18	BLUE	TMSD DATA 0+
PIN 6	PIN 9	WHITE	TMSD DATA 1-
PIN 5	PIN 11	BRAID	TMSD DATA 1 SHIELD
PIN 4	PIN 10	GREEN	TMSD DATA 1+
PIN 3	PIN 1	WHITE	TMSD DATA 2-
PIN 2	PIN 3	BRAID	TMSD DATA 2 SHIELD
PIN 1	PIN 2	RED	TMSD DATA 2+
HDMI	DVI-D	COLOR	CABLE FUNCTION

ITEM	DESCRIPTION	SCALE	DESIGN UNITS	METRIC	THIRD ANGLE PROJECTION	QTY.
H	HDMI METAL PLATED	47152-6009	---	---	---	1
G	HDMI METAL CAN	47152-4001	---	---	---	1
F	HDMI HOUSING ASSY	47152-1100	---	---	---	1
E	DVI THUMB SCREW	887806077	---	---	---	2
D	PCB	887899569/887899570	---	---	---	1
C	ONE BODY CAN	887899392	---	---	---	1
B	DVI-D SINGLE CHANNEL G/F CONNECTOR	743230001	---	---	---	1
A	DVI SINGLE LINK CABLE (SEE TABLE)	---	---	---	---	1

GENERAL TOLERANCES (UNLESS SPECIFIED)	DIMENSION STYLE	SCALE	DESIGN UNITS	METRIC	THIRD ANGLE PROJECTION
m/m	MM ONLY	---	---	---	---
INCH	DATE	---	---	---	---
4 PLACES ± ---	JFZHENG	2005/12/26	TITLE #28 HDMI TO DVI 1M CABLE ASSY		
3 PLACES ± ---	CHECKED BY	DATE			
2 PLACES ± ---	JFZHENG	2005/12/26			
1 PLACE ± ---	APPROVED BY	DATE			
ANGULAR ± ---°	DQLUO	2005/12/26			
DRAFT WHERE APPLICABLE MUST REMAIN WITHIN DIMENSIONS		MATERIAL NO.		DOCUMENT NO.	
		SD-887683510		SHEET NO. 2 OF 2	



MOLEX P/N	DESCRIPTION	LENGTH	CABLE COLOR	CABLE P/N
88768-3530	HDMI TO DVI-D(M) CABLE ASSY.5M	5000 ± 100	BLACK	7.3MM(TMDS - AWGR28) 887808276
88768-3520	HDMI TO DVI-D(M) CABLE ASSY.3M	3000 ± 80	BLACK	7.3MM(TMDS - AWGR28) 887808276
88768-3510	HDMI TO DVI-D(M) CABLE ASSY.2M	2000 ± 60	BLACK	7.3MM(TMDS - AWGR28) 887808276
88768-3500	HDMI TO DVI-D(M) CABLE ASSY.1M	1000 ± 30	BLACK	7.3MM(TMDS - AWGR28) 887808276

GENERAL TOLERANCES (UNLESS SPECIFIED)	QUALITY SYMBOLS	DESIGN STYLE	SCALE	DESIGN UNITS
4 PLACES ± --- INCH	▶=0	MM ONLY	---	METRIC
3 PLACES ± ---	◻=0	DRAWN BY JFZHENG	DATE 2005/12/26	TITLE #28 HDMI TO DVI 1M CABLE ASSY
2 PLACES ± ---		CHECKED BY JFZHENG	DATE 2005/12/26	
1 PLACE ± ---		APPROVED BY DQLUO	DATE 2005/12/26	
ANGULAR ± ---°		MATERIAL NO. ENTER PART SD-887683520	DOCUMENT NO.	SHEET NO. 1 OF 00
DRAFT WHERE APPLICABLE MUST REMAIN WITHIN DIMENSIONS				

MOLEX INCORPORATED

THIS DRAWING CONTAINS INFORMATION THAT IS PROPRIETARY TO MOLEX AND SHOULD NOT BE USED WITHOUT WRITTEN PERMISSION

NOTE:

1. OVERMOLD SPECIFICATION:
 - 1.1 DVI BOOT MOLDED SNOW WHITE PVC RESIN 887800076,UL94V-0.
 - 1.2 HDMI INNERMOLD WITH BK PVC 887800019.
 - 1.3 HDMI OVERMOLD WITH PVC 887800150
2. MECHANICAL SPECIFICATION
 - 2.1 CABLE SHOULD STAND THE PULL FORCE 89-111N FOR 30 SECONDS WITH NO VISIBLE TERMINATION DAMAGE.
 - 2.2 CABLE SHOULD PASS THE FLEX TEST IN 100 CYCLES AT EACH OF PLANES, PER EIA 364-41, CONDITION 1.
3. PRODUCT ELECTRICAL SPECIFICATION:
 - 3.1 DIELECTRIC STRENGTH.
 - 3.2 INSULATION RESISTANCE.
 - 3.3 CONDUCTIVE RESISTANCE.
 - 3.4 TMDS Signals Time Domain Impedence
 - 3.5 TMDS Signals Time Domain Crosstalk:FEXT
 - 3.6 TMDS Signals Skew
 - 3.7 Attenuation

4. REFER TO ES-002 ELECTRICAL SPECIFICATION FOR DETAILS.
4. CABLE CONSTRUCTION/CABLE (AWG#28*1P+D)*4 + AWG#28*1P + AWG#28*3C, 7.3MMOD
5. DVI CONNECTOR SPECIFICATION(DVI)
 - 5.1 REFER TO PRODUCT SPEC. PS74320-001
 - 5.2 CONTACT PLATING: AU FLASH.
6. THIS PRODUCT MUST MEET ROHS COMPLIANCE.

SHIELD	SHIELD	OVERALL SHIELD	GROUND
PIN 19	PIN 16	WHITE	HOT PLUG DETECT
PIN 18	PIN 14	YELLOW	POWER +5V
PIN 17	PIN 15	ORANGE	GROUND(+5V&DDC)
PIN 16	PIN 7	RED	DDC DATA(SDA)
PIN 15	PIN 6	VIOLET	DDC CLOCK(SCL)
PIN 12	PIN 24	WHITE	TMDS CLOCK-
PIN 11	PIN 22	BRAID	TMDS CLOCK SHIELD
PIN 10	PIN 23	BROWN	TMDS CLOCK+
PIN 9	PIN 17	WHITE	TMDS DATA 0-
PIN 8	PIN 19	BRAID	TMDS DATA 0 SHIELD
PIN 7	PIN 18	BLUE	TMDS DATA 0+
PIN 6	PIN 9	WHITE	TMDS DATA 1-
PIN 5	PIN 11	BRAID	TMDS DATA 1 SHIELD
PIN 4	PIN 10	GREEN	TMDS DATA 1+
PIN 3	PIN 1	WHITE	TMDS DATA 2-
PIN 2	PIN 3	BRAID	TMDS DATA 2 SHIELD
PIN 1	PIN 2	RED	TMDS DATA 2+
HDMI	DVI-D	COLOR	CABLE FUNCTION

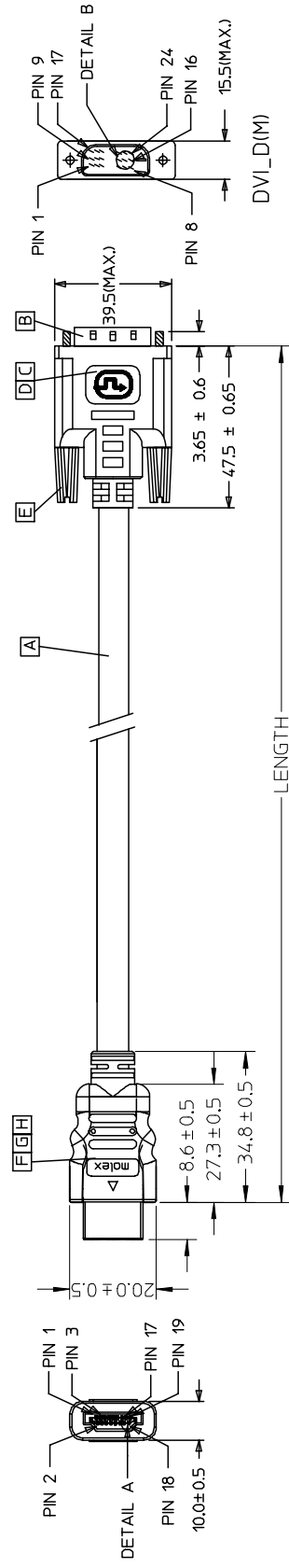
ITEM	DESCRIPTION	SCALE	DESIGN UNITS	METRIC	THIRD ANGLE PROJECTION	QTY.
H	HDMI METAL PLATED	47152-6009	---	METRIC	☉	1
G	HDMI METAL CAN	47152-4001	---	METRIC	☉	1
F	HDMI HOUSING ASSY.	47152-1100	---	METRIC	☉	1
E	DVI THUMB SCREW	887806077	---	METRIC	☉	2
D	PCB	887899569/887899570	---	METRIC	☉	1
C	ONE BODY CAN	887899392	---	METRIC	☉	1
B	DVI-D SINGLE CHANNEL G/F CONNECTOR	743230001	---	METRIC	☉	1
A	DVI SINGLE LINK CABLE (SEE TABLE)		---	METRIC	☉	1

QUALITY SYMBOLS	GENERAL TOLERANCES (UNLESS SPECIFIED)	DIMENSION STYLE	SCALE	DESIGN UNITS	METRIC	THIRD ANGLE PROJECTION
= 0	4 PLACES ± --- INCH	MM ONLY	---	METRIC	☉	
= 5	3 PLACES ± --- INCH	DRAWN BY	DATE	TITLE		
	2 PLACES ± --- INCH	JFZHENG	2005/12/26	#28 HDMI TO DVI 1M CABLE ASSY		
	1 PLACE ± --- INCH	CHECKED BY	DATE			
	ANGULAR ± --- °	JFZHENG	2005/12/26			
		APPROVED BY	DATE			
		DOLUO	2005/12/26			
		MATERIAL NO.	DOCUMENT NO.			
			SD-887683520			
				SHEET NO. 2 OF 2		

DRAFT WHERE APPLICABLE MUST REMAIN WITHIN DIMENSIONS

7 6 5 4 3 2 1

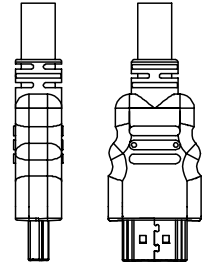
E D C B A



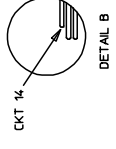
DVI_D(M)

LENGTH

HDMI(M)



DETAIL A



BACK SIDE

MOLEX P/N	DESCRIPTION	LENGTH	CABLE COLOR	CABLE P/N
88768-3530	HDMI TO DVI-D(M) CABLE ASSY.5M	5000 ± 100	BLACK	7.3MM(MTDS - AWGR28) 887808276
88768-3520	HDMI TO DVI-D(M) CABLE ASSY.3M	3000 ± 80	BLACK	7.3MM(MTDS - AWGR28) 887808276
88768-3510	HDMI TO DVI-D(M) CABLE ASSY.2M	2000 ± 60	BLACK	7.3MM(MTDS - AWGR28) 887808276
88768-3500	HDMI TO DVI-D(M) CABLE ASSY.1M	1000 ± 30	BLACK	7.3MM(MTDS - AWGR28) 887808276

QUALITY SYMBOLS		GENERAL TOLERANCES (UNLESS SPECIFIED)		DIMENSION STYLE		SCALE		DESIGN UNITS	
▶=0	□=0	mm	±---	MM ONLY	---	METRIC	---	THIRD ANGLE PROJECTION	
		INCH	±---	DRAWN BY	DATE	TITLE			
				JFZHENG	2005/12/26	#28 HDMI TO DVI 1M CABLE ASSY			
				CHECKED BY	DATE				
				JFZHENG	2005/12/26				
				APPROVED BY	DATE				
				DOLUO	2005/12/26				
DRAFT WHERE APPLICABLE MUST REMAIN WITHIN DIMENSIONS		ANGULAR ±---		MATERIAL NO.		DOCUMENT NO.		SHEET NO.	
				ENTER PART		SD-887683530		1 OF 00	
				THIS DRAWING CONTAINS INFORMATION THAT IS PROPRIETARY TO MOLEX INCORPORATED AND SHOULD NOT BE USED WITHOUT WRITTEN PERMISSION					

6 5 4 3 2 1

E D C B A

NOTE:

- 1. OVERMOLD SPECIFICATION:
 - 1.1 DVI BOOT MOLDED SNOW WHITE PVC RESIN 887800076,UL94V-0.
 - 1.2 HDMI INNERMOLD WITH BK PVC 887800019.
 - HDMI OVERMOLD WITH PVC 887800150
- 1.3 HDMI DUST COVER WITH PE 887800008

2. MECHANICAL SPECIFICATION

- 2.1 CABLE SHOULD STAND THE PULL FORCE 89-111N FOR 30 SECONDS WITH NO VISIBLE TERMINATION DAMAGE.
- 2.2 CABLE SHOULD PASS THE FLEX TEST IN 100 CYCLES AT EACH OF PLANES, PER EIA 364-41, CONDITION 1.

3. PRODUCT ELECTRICAL SPECIFICATION:

- 3.1 DIELECTRIC STRENGTH.
- 3.2 INSULATION RESISTANCE.
- 3.3 CONDUCTIVE RESISTANCE.
- 3.4 TMDS Signals Time Domain Impedence
- 3.5 TMDS Signals Time Domain Crosstalk:FEXT
- 3.6 TMDS Signals Skew
- 3.7 Attenuation

REFER TO ES-002 ELECTRICAL SPECIFICATION FOR DETAILS.

4.CABLE CONSTRUCTION/CABLE

(AWG#28*1P+D)*4 + AWG#28*1P + AWG#28*3C, 7.3MMOD

5. DVI CONNECTOR SPECIFICATION(DVI)

- 5.1 REFER TO PRODUCT SPEC. PS74320-001
- 5.2 CONTACT PLATING: AU FLASH.

6. THIS PRODUCT MUST MEET ROHS COMPLIANCE.

SHIELD	SHIELD	OVERALL SHIELD	GROUND
PIN 19	PIN 16	WHITE	HOT PLUG DETECT
PIN 18	PIN 14	YELLOW	POWER +5V
PIN 17	PIN 15	ORANGE	GROUND(+5V&DDC)
PIN 16	PIN 7	RED	DDC DATA(SDA)
PIN 15	PIN 6	VIOLET	DDC CLOCK(SCL)
PIN 12	PIN 24	WHITE	TMDS CLOCK-
PIN 11	PIN 22	BRAID	TMDS CLOCK SHIELD
PIN 10	PIN 23	BROWN	TMDS CLOCK+
PIN 9	PIN 17	WHITE	TMDS DATA 0-
PIN 8	PIN 19	BRAID	TMDS DATA 0 SHIELD
PIN 7	PIN 18	BLUE	TMDS DATA 0+
PIN 6	PIN 9	WHITE	TMDS DATA 1-
PIN 5	PIN 11	BRAID	TMDS DATA 1 SHIELD
PIN 4	PIN 10	GREEN	TMDS DATA 1+
PIN 3	PIN 1	WHITE	TMDS DATA 2-
PIN 2	PIN 3	BRAID	TMDS DATA 2 SHIELD
PIN 1	PIN 2	RED	TMDS DATA 2+
HDMI	DVI-D	COLOR	CABLE FUNCTION

H	HDMI METAL PLATED 47152-6009	1
G	HDMI METAL CAN 47152-4001	1
F	HDMI HOUSING ASSY. 47152-1100	1
E	DVI THUMB SCREW 887806077	2
D	PCB 887899569/887899570	1
C	ONE BODY CAN 887899392	1
B	DVI-D SINGLE CHANNEL G/F CONNECTOR 743230001	1
A	DVI SINGLE LINK CABLE (SEE TABLE)	1

ITEM	DESCRIPTION	SCALE	DESIGN UNITS	METRIC	THIRD ANGLE PROJECTION	QTY.

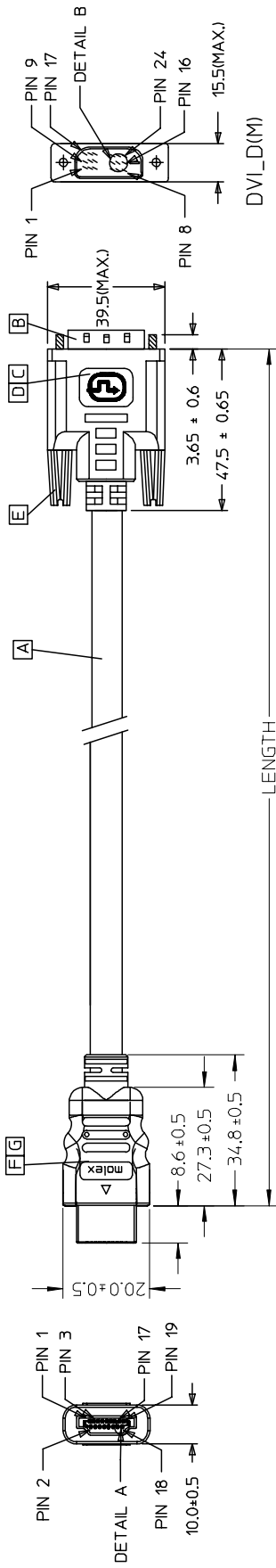
				#28	HDMI TO DVI 1M CABLE ASSY	

QUALITY SYMBOLS	GENERAL TOLERANCES (UNLESS SPECIFIED)	INCH	MM ONLY	DRAWN BY	DATE	TITLE
0	4 PLACES ±	±---	2005/12/26	JFZHENG	2005/12/26	
5	3 PLACES ±	±---	2005/12/26	JFZHENG	2005/12/26	
	2 PLACES ±	±---				
	1 PLACE ±	±---				
	ANGULAR ±---	°				

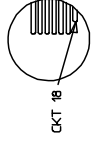
REV	DESCRIPTION	DATE	APP'D	CHK'D	DRWN	DATE
1	INITIAL DMS CRP TION	2005/12/27			JFZHENG	2005/12/30
2	APP'D DLUU	2006/01/16				

MOLEX	DOCUMENT NO.	SHEET NO.
MOLEX INCORPORATED	SD-887683530	2 OF 2

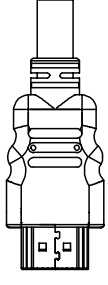
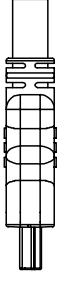
1 2 3 4 5 6 7



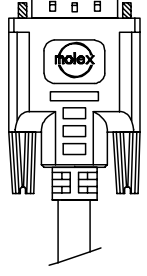
HDMI(M)



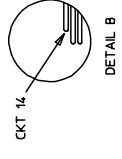
DETAIL A



BACK SIDE



BACK SIDE



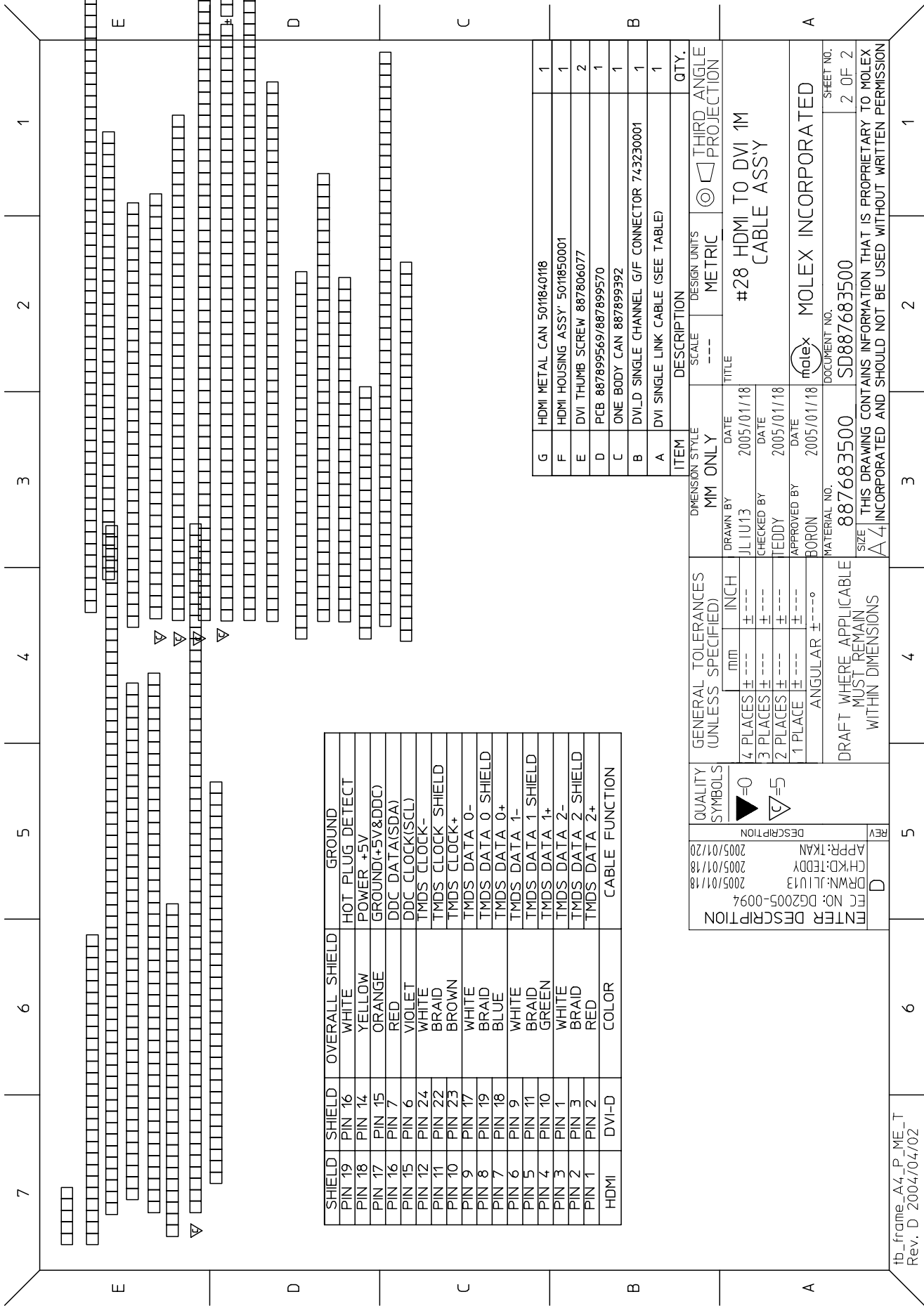
DETAIL B

88768-3530	HDMI TO DVI-D(M) CABLE ASSY,5M	5000 ± 100	BLACK	7.3MM(TMS - AWG#28)	887808276
88768-3520	HDMI TO DVI-D(M) CABLE ASSY,3M	3000 ± 80	BLACK	7.3MM(TMS - AWG#28)	887808276
88768-3510	HDMI TO DVI-D(M) CABLE ASSY,2M	2000 ± 60	BLACK	7.3MM(TMS - AWG#28)	887808276
88768-3500	HDMI TO DVI-D(M) CABLE ASSY,1M	1000 ± 30	BLACK	7.3MM(TMS - AWG#28)	887808276
MX P/N	DESCRIPTION	LENGTH	CABLE COLOR	CABLE OD	CABLE P/N

GENERAL TOLERANCES (UNLESS SPECIFIED)		MM ONLY	SCALE	DESIGN UNITS	THIRD ANGLE PROJECTION
4 PLACES ±	mm	INCH	---	METRIC	
3 PLACES ±	---	---			
2 PLACES ±	---	---			
1 PLACE ±	---	---			
ANGULAR ±		---			

QUALITY SYMBOLS		DRAWN BY		DATE	
▶=0		JL IU13		2005/01/18	
∇=0		CHECKED BY		DATE	
		TEDDY		2005/01/18	
		APPROVED BY		DATE	
		BORON		2005/01/18	
DRAFT WHERE APPLICABLE MUST REMAIN WITHIN DIMENSIONS		MATERIAL NO.		DOCUMENT NO.	
		887683500		SD887683500	
		SIZE		THIS DRAWING CONTAINS INFORMATION THAT IS PROPRIETARY TO MOLEX INCORPORATED AND SHOULD NOT BE USED WITHOUT WRITTEN PERMISSION	
		A4			

TITLE		#28 HDMI TO DVI 1M CABLE ASSY	
SHEET NO.		1 OF 2	
MOLEX INCORPORATED			



SHIELD	SHIELD	OVERALL SHIELD	GROUND
PIN 19	PIN 16	WHITE	HOT PLUG DETECT
PIN 18	PIN 14	YELLOW	POWER +5V
PIN 17	PIN 15	ORANGE	GROUND(+5V&DDC)
PIN 16	PIN 7	RED	DDC DATA(SDA)
PIN 15	PIN 6	VIOLET	DDC CLOCK(SCL)
PIN 12	PIN 24	WHITE	TMDS CLOCK-
PIN 11	PIN 22	BRAID	TMDS CLOCK SHIELD
PIN 10	PIN 23	BROWN	TMDS CLOCK+
PIN 9	PIN 17	WHITE	TMDS DATA 0-
PIN 8	PIN 19	BRAID	TMDS DATA 0 SHIELD
PIN 7	PIN 18	BLUE	TMDS DATA 0+
PIN 6	PIN 9	WHITE	TMDS DATA 1-
PIN 5	PIN 11	BRAID	TMDS DATA 1 SHIELD
PIN 4	PIN 10	GREEN	TMDS DATA 1+
PIN 3	PIN 1	WHITE	TMDS DATA 2-
PIN 2	PIN 3	BRAID	TMDS DATA 2 SHIELD
PIN 1	PIN 2	RED	TMDS DATA 2+
HDMI	DVI-D	COLOR	CABLE FUNCTION

ITEM	DESCRIPTION	SCALE	DESIGN UNITS	THIRD ANGLE PROJECTION	QTY.
G	HDMI METAL CAN 501840118	---	METRIC		1
F	HDMI HOUSING ASSY' 5011850001	---	METRIC		1
E	DVI THUMB SCREW 887806077	---	METRIC		2
D	PCB 887899569/887899570	---	METRIC		1
C	ONE BODY CAN 887899392	---	METRIC		1
B	DVI-D SINGLE CHANNEL G/F CONNECTOR 743230001	---	METRIC		1
A	DVI SINGLE LINK CABLE (SEE TABLE)	---	METRIC		1

GENERAL TOLERANCES (UNLESS SPECIFIED)		QUALITY SYMBOLS	DESCRIPTION
mm	INCH		DATE
4 PLACES ±----	±----		2005/01/18
3 PLACES ±----	±----		DATE
2 PLACES ±----	±----		2005/01/18
1 PLACE ±----	±----		DATE
ANGULAR ±----°	±----°		2005/01/18
DRAFT WHERE APPLICABLE MUST REMAIN WITHIN DIMENSIONS			
MATERIAL NO. 887683500			
DOCUMENT NO. SD887683500			
SHEET NO. 2 OF 2			

tb_frame_A4_P_ME_T
 Rev. D 2004/04/02